

# Lakeside Fire Protection District

## Annual Report 2016

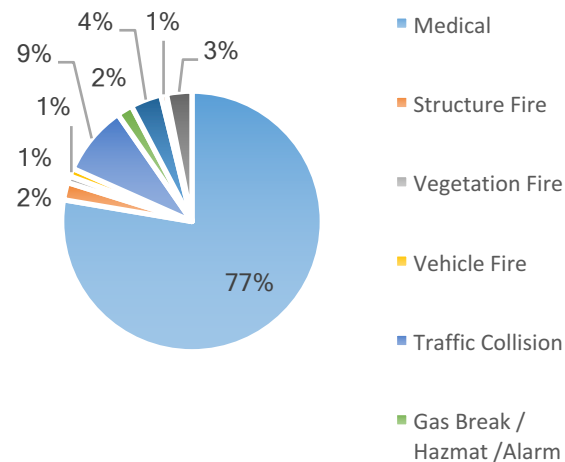


### Annual Incident Statistics

Year to Date Incidents:	Total	In District*		Mutual Aid**		In LKS Not Run by LKS
	9,039	6,348	70.23%	2,691	29.77%	149

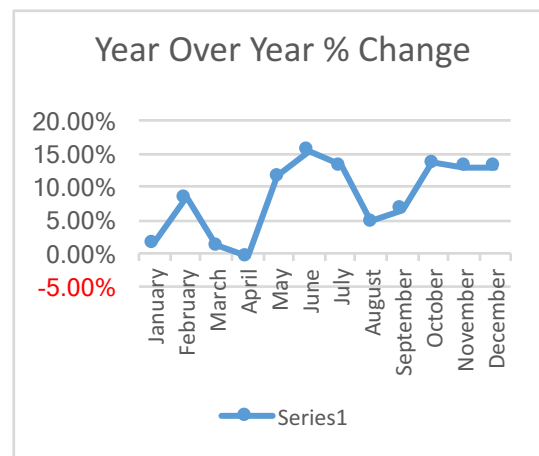
Type	Total	%
Medical	6,905	76%
Structure Fire	192	2%
Vegetation Fire	75	1%
Vehicle Fire	88	1%
Traffic Collision	773	9%
Gas Break / Hazmat / Alarm	174	2%
Public Service	341	4%
Rescue	62	1%
Other	280	3%

YTD Incident Distribution



### Monthly Incident Statistics

Month	2015	2016	% Change
January	748	759	1.47%
February	686	744	8.45%
March	658	665	1.06%
April	655	652	-0.46%
May	708	790	11.58%
June	671	774	15.35%
July	671	760	13.26%
August	727	761	4.68%
September	742	791	6.60%
October	642	729	13.55%
November	618	698	12.94%
December	650	734	12.92%
<b>TOTAL</b>	<b>8,176</b>	<b>8,857</b>	<b>8.33%</b>



**8.33% YTD Change from Last Year**

\* Incidents originating within the borders of the Lakeside Fire Protection District

\*\* Incidents originating outside of the borders of the Lakeside Fire Protection District which LKS units respond to. (Includes non-LKS CSA69 calls)