

# Lakeside Fire Protection District

## 2017 Incident Summary

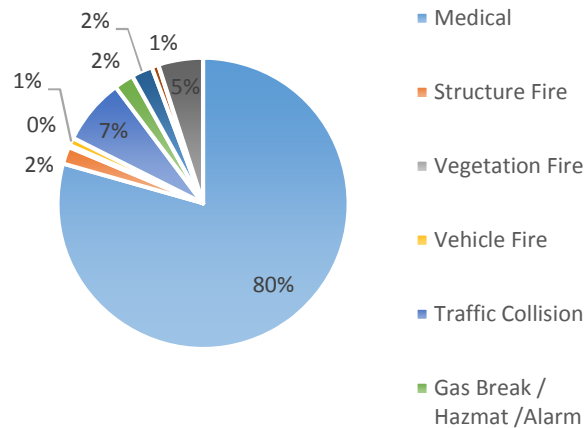


### Annual Incident Statistics

Year to Date Incidents:	Total	In District*		Mutual Aid**	
	9,702	8,351	86.08%	1,351	13.92%

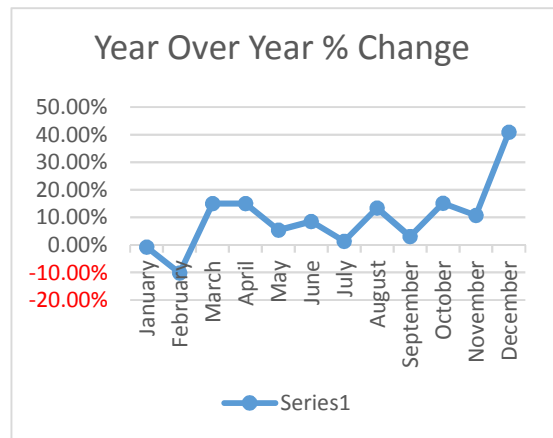
Incident Distribution		
Type	Total	%
Medical	7,704	79%
Structure Fire	185	2%
Vegetation Fire	24	0%
Vehicle Fire	82	1%
Traffic Collision	711	7%
Gas Break / Hazmat / Alarm	213	2%
Public Service	225	2%
Rescue	75	1%
Other	483	5%

YTD Incident Distribution



### Monthly Incident Statistics

Month	2016	2017	% Change
January	759	753	-0.79%
February	744	668	-10.22%
March	665	765	15.04%
April	652	750	15.03%
May	790	832	5.32%
June	774	840	8.53%
July	760	770	1.32%
August	761	863	13.40%
September	791	815	3.03%
October	729	839	15.09%
November	698	773	10.74%
December	734	1,034	40.87%
<b>TOTAL</b>	<b>8,857</b>	<b>9,702</b>	<b>9.54%</b>



**9.54% YTD Change from Last Year**

\* Incidents originating within the borders of the Lakeside Fire Protection District

\*\* Incidents originating outside of the borders of the Lakeside Fire Protection District which LKS units respond to. (Includes non-LKS CSA69 calls)