

Lakeside Fire Protection District

2018 Incident Summary

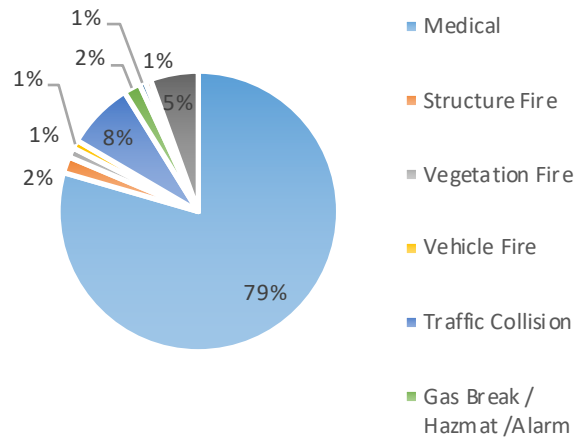


Annual Incident Statistics

Year to Date Incidents:	Total	In District*		Mutual Aid**		Unit Responses
		9,685	6,799	70.20%	2,886	29.80%

Incident Distribution		
Type	Total	%
Medical	7,697	79%
Structure Fire	182	2%
Vegetation Fire	109	1%
Vehicle Fire	93	1%
Traffic Collision	749	8%
Gas Break / Hazmat /Alarm	187	2%
Public Service	69	1%
Rescue	63	1%
Other	536	6%

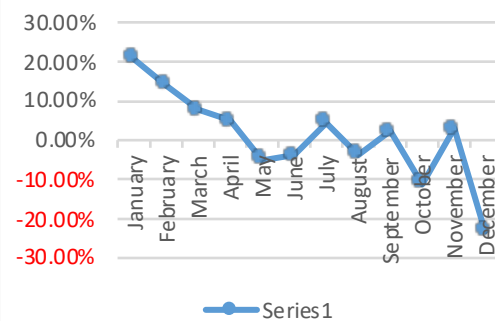
YTD Incident Distribution



Monthly Incident Statistics

Month	2017	2018	% Change
January	753	909	20.72%
February	668	762	14.07%
March	765	824	7.71%
April	750	786	4.80%
May	832	791	-4.93%
June	840	808	-3.81%
July	770	806	4.68%
August	863	833	-3.48%
September	815	833	2.21%
October	839	745	-11.20%
November	773	794	2.72%
December	1,034	794	-23.21%
TOTAL	9,702	9,685	-0.18%

Year Over Year % Change



-0.18% YTD Change from Last Year

* Incidents originating within the borders of the Lakeside Fire Protection District

** Incidents originating outside of the borders of the Lakeside Fire Protection District which LKS units respond to. (Includes non-LKS CSA69 calls)